

CIVILIZATION

INTERACTIVE CD-ROM



RELIGIONS OF THE WORLD



MENTOR
MULTIMEDIA™

User's Guide

© Yorkshire International Thomson
Multimedia 1995
First published by ILP and Yorkshire
Television 1994

Yorkshire International Thomson
Multimedia is a partnership
between
Thomas Nelson & Sons Ltd.
and Yorkshire Television Ltd.

Thomas Nelson is an International
Thomson Publishing Company

Manufactured & Distributed in
North America by
MENTOROM MULTIMEDIA™
a division of
BFS Entertainment &
Multimedia Limited
360 Newkirk Road
Richmond Hill
Ontario L4C 3G7
Canada

For more information call
1-800-353-3149

All rights reserved. No paragraph of
this publication may be reproduced,
copied or transmitted, save with
written permission or in accordance
with the provisions of the
Copyright, Design and Patents Act
1988, or under the terms of any
license permitting limited copying
issued by the Copyright Licensing
Agency,
90 Tottenham Court Road, London,
W1P 9HE.

Windows and Video for Windows
are trademarks of
Microsoft Corporation Inc.

CONTENTS

| | |
|--------------------------------------|-----------|
| Introduction | 4 |
| Getting Started | 6 |
| System Requirements | 6 |
| Installation | 6 |
| Running the application | 7 |
| Religions Of The World CD-ROM | 8 |
| Contents summary | 9 |
| Guide to icons | 11 |
| Special features | 16 |
| Guided tour | 21 |
| Assessment Manager | 29 |
| Scrapbook | 35 |
| Description | 36 |
| Icons | 40 |
| Sample route | 41 |

INTRODUCTION

Components of the pack

- Religions Of The World CD-ROM
- User's guide

Overview

Welcome to the Religions Of The World CD-ROM. This CD-ROM is divided into two main sections: Aspects of Religion and Contemporary Issues.

The **Aspects of Religion** section opens with a menu screen which features an introductory video for each of the eight religions covered. From this screen the **Matrix** can be reached; this is the main body of the CD-ROM, providing extensive coverage of key aspects of each religion as a living faith. Each religion can be investigated under the same headings – people, worship, festivals and so on. The other options from the Aspects of Religion menu are **Visit** and **Personal View**. Visit gives you the opportunity to explore a place of worship for each of the eight religions through a series of interactive screens. Personal View consists of specially recorded interviews with followers of each faith, investigating what the religion means to them and how it affects their everyday lives.

In **Contemporary Issues**, the ethical beliefs of six of the world's religions are examined in the context of six main topics. These topics cover both major world issues, such as war and the environment and everyday domestic and social concerns, such as marriage and abortion.

These sections are supported by a number of powerful tools to help you navigate around the disc and make the most effective use of the information. The **Index** will take you directly to relevant parts of the disc. A comprehensive **Glossary** provides definitions of words that may be unfamiliar and brief notes on major figures. Within both the Aspects of Religion Matrix and Contemporary Issues, **Compare** enables you to view the text and images from two different religions side by side on the screen and compare their approaches to the same topic.

TrailSave enables you to bring together information from anywhere on the disc and rearrange it to create your own presentation. It can also be used to create an assignment, a sample route through a section of the disc or a revision aid. Full- and quarter-screen pictures, text and video clips can be saved for later viewing using the TrailSave Viewer.

GETTING STARTED

System Requirements

Installation

Running the CD-ROM

System requirements

The recommended specification is as follows:

- 486 based IBM PC compatible computer (386 minimum)
- 4 megabytes RAM
- SVGA Graphics (256 colours)
- MS-DOS 5.0 or above
- Microsoft Windows 3.1
- CD-ROM drive (double speed)
- Mouse
- Sound card

Installation

- 1 Start Windows.
- 2 Place the CD-ROM into your CD-ROM drive. Depending on the type of drive, you may have to put the disc into a caddy before proceeding.
- 3 Select 'Run...' from the File menu in Program Manager and type the following:

<drive>:\setup

Where <drive> is the drive letter of your CD-ROM.

For example, if your CD-ROM drive is set up as drive 'D', you would type the following:

d:\setup

Press **Enter** or click on **OK**. The set-up program will now run.

- 4 Follow the instructions given in the set-up program. This will install the software and create a program group in Program Manager. Parts of the software can be installed on your hard disk. This makes it quicker to load than loading from the CD-ROM. The performance may also be improved.
- 5 Install Video for Windows (version 1.1) on to your system. If this has already been done, you can skip this step. If you are not sure if you already have Video for Windows, you can reinstall it without any adverse affects.
- 6 Select '**Run...**' from the File menu in Program Manager, and type the following:
<drive>:\video\setup
Where <drive> is the drive letter of your CD-ROM. This will be the same as the drive letter you entered in step 3. For example, if your CD-ROM is set up as drive 'D', you would type the following:
d:\video\setup
Press Enter or click on **OK**.
The video set-up program will now run.
- 7 Once the installation is complete, exit from Windows and reboot your system.

Running the CD-ROM

Once the installation procedures described above have been completed, you can use the Religions Of The World CD-ROM by following the simple steps set out below:

- 1 Start Windows.
- 2 Load the CD-ROM into your CD-ROM drive.
- 3 Select the Religions Of The World icon in Program Manager.
- 4 Double click on this icon.



RELIGIONS OF THE WORLD

Contents Summary

Guide To Icons

Special Features

Overview

Index

Compare

Glossary

TrailSave

Guided Tour

CONTENTS SUMMARY

Overview

Audio-visual tour round the **Religions Of The World** CD-ROM.

Religions Of The World

Religions covered within this section

Buddhism

Christianity

Confucianism

Hinduism

Islam

Judaism

Shinto

Sikhism

Religions Of The World - opening screen

Text and video overviews

Menu

Visit

Interactive 'visits' to places of worship

Personal View

Audio interviews

Matrix

In-depth coverage of the following topics:

Beliefs

Community

Festivals

People

Places

Scripture

Worship

Contemporary Issues

Religions covered within this section

Buddhism

Christianity

Hinduism

Islam

Judaism

Sikhism

Issue

Crime and Punishment

Sub-issue

Crime and the Attitude to Lawbreakers

The Aims of Punishment

Capital Punishment

Life and Living

Abortion

Sexual Relationships

Marriage and Divorce

Euthanasia

War and Peace

Morality of War

Pacifism and Disarmament

Prejudice

Colour and Race

Gender

Distribution of Wealth

Charity and Overseas Aid

Poverty and Hunger

The Natural World

Conservation

GUIDE TO ICONS

As you use the disc, you will encounter the icons set out below. In each case, use the mouse to place the cursor over the required icon. Click on the left mouse button to activate the facility or tool.

General controls



Selects Christianity



Selects Judaism



Selects Islam



Selects Sikhism



Selects Hinduism



Selects Buddhism



Selects Confucianism



Selects Shinto



Selects general introduction



Change religious icon – opens dialogue box to select religion

Page turn/slide controls



Moves one slide forward



Moves one slide back



Slide selector – allows you to jump to a specified slide



Activates the Glossary facility



Activates the Index facility



Moves you back to the section menu



Enlarges the current text to full screen size



Enlarges the current picture to full screen size



Shows the other pictures available for the current topic



Back



Help – brings up a relevant help window



Turn sound on and off



Activates the Compare facility



Plays a relevant video clip



Return to text from a video

Video controls



Play



Rewind



Return to start



Fast forward



Pause



Sound on/off



Enlarges/shrinks video (video is higher quality at smaller size)

GUIDE TO ICONS

TrailSave controls



TrailSave Plus – adds the current slide to the trail



TrailSave viewer – allows you to view the current trail

Data export



Data export – allows you to save pictures, text or video to clipboard or disc

Aspects of Religion



Accesses the opening screen of the Aspects of Religion section from the main menu



Clicking on any of the nine religious icons will select the religion

Personal View



Moves you to the Personal View section



Selects a question from the list provided



Plays an audio interview



Stops an audio interview



Moves to the next interviewee



Moves back to the previous interviewee



Enables you to change religion without leaving Personal View



Returns you to the Aspects of Religion opening screen

Visit



Moves you to the Visit section



Takes you to a screen about whatever is shown in the icon. A number of pictorial icons are displayed around the central image of the screen, each one representing a point of interest. If you don't recognise what is shown on the icon, don't worry – The Visit is a chance to explore the place of worship for yourself.



Returns you to the previously selected screen



Allows you to change religion without leaving the Visit section

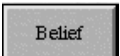


Returns you to the Aspects of Religion opening screen

Matrix



Takes you to the Matrix section of the disc



Aspects buttons allow you to choose one of nine topics of study within the selected religion (see the Contents Summary for the list of the topics available)

Contemporary Issues



Accesses the opening screen of the Contemporary Issues section



Issues buttons – each of these buttons selects one of the six issues (see the Contents Summary for a list of topics available)



Sub-issue buttons – once a main issue has been selected, a number of sub-issues are available to be investigated

Investigate

Enables you to investigate a topic once a main issue and sub-issue have been selected



The seven religious icons enable you to examine a religious viewpoint on the Issue and sub-issue selected

Others

Others buttons enable you to change an Issue or sub-issue without having to go back to the menu. The top **others** button changes the Issue, while the lower **others** button changes the sub-issue.

SPECIAL FEATURES

Overview



When you first use the Religions Of The World CD-ROM you may wish to click on **Overview** on the title screen to obtain a quick summary of the contents and features of the disc.

Index



To search for information on a specific subject, click on the **Index** icon. Scroll through the words and phrases as they appear in the left-hand column of the index. Alternatively, click on the box that appears above the list and type in the topic you are looking for.

Aspects of Religion Index

| | | |
|--------------------------------|--------------------------------|-------------------------------|
| Islamic Beliefs | War | Islam and Pacifism |
| Ise, Grand Shrine of ▶ | Basic Beliefs - Risalah ▶ | Islam and Pacifism |
| Islamic art and architecture ▶ | Basic Beliefs - Tawihd | Islam and the Morality of War |
| Islamic Artefacts ▶ | Islam and Abortion | |
| Islamic Beliefs ▶ | Islam and Conservation | |
| Islamic Festivals ▶ | Islam and Euthanasia | |
| Islamic New Year | Islam and Sexual Relationships | |
| Islamic rites of passage ▶ | Islam: Marriage and Divorce | |
| Israel ▶ | Seven basic beliefs of Islam ▶ | |
| Jacob and His Sons | War ▶ | |
| Jagganatha Temple | | |

Navigation icons: Home, Info, Tab, and a plus sign.

Goto Slide: Islam and Pacifism

An arrow to the right of an index entry means that there are a number of sub-entries associated with the word or phrase. Clicking on an entry will reveal these sub-entries in the middle column. Sub-entries that are displayed with an arrow have a number of slides indexed to them. Clicking on these sub-entries will reveal a list of associated slides in the third, right-hand, column. To view a slide, click on the topic you wish to view and then click on the 'Go to Slide' button at the bottom of the screen.

Compare



The Compare facility enables you to compare text and images from two different religions by placing them side by side on the screen. You can compare information on any one topic from either Matrix or Contemporary Issues.

To use Compare you should already be viewing one religion. Click on the **Compare** icon to go to the Compare screen. The current slide will be reduced and displayed on the left-hand side of the screen. To select the second religion, click on the Religions icon at the top of the blank half of the screen:



Clicking on this icon will bring up a list of the religions available for investigation. The two religions now displayed can be changed by clicking on the Religions icon on either side of the screen.

Other icons available in the Compare facility are:



View the full screen version of the current picture



View the full screen version of the current text



View any other relevant pictures

Clicking on the **Others** icon will enable you to select or change the topic of study. In Matrix, the Others icon displays a menu of Aspects. In Contemporary Issues there are two Others icons. The top icon selects an Issue and the bottom icon selects a Sub-issue. Selecting or changing a topic from the Others menus will change the information on both sides of the screen, enabling a comparison between two religions.



To return to your original slide, click on the **back** icon.

Glossary

As you use this disc, you may come across unfamiliar words or phrases. To help you, a glossary is provided which will define these words. There are two ways to access a glossary entry:

- Words that appear in red in the text are defined in the glossary – just click once on the word for an on-screen definition.



Clicking on the **glossary** icon will access the full list of words in the glossary. When you select a word, the definition will appear and you will hear the word spoken. As with other text on this disc, this material can then be copied to a clipboard or file if required.

TrailSave

TrailSave is a powerful tool which allows you to bring together slides from anywhere on the disc. Once you have created a trail, the slides may be rearranged to create a customised presentation. Trails can be saved and viewed at a later stage.



You can add a slide to the trail from the index or by going to the slide itself. In either case, click the **TrailSave Plus** icon.

Confirm your choice by clicking yes in the dialogue box.



Alternatively, click the **TrailSave** icon and click the **Add current slide** to trail button. You will see the title of the slide appear in the trail box.

To return to the current slide, click on the **back** icon at the bottom left of the screen.

In order to reposition a slide, select the slide you want to move, click the **Reposition highlighted slide in trail** button on the TrailSave screen and follow the on-screen instructions.

To view your trail from any slide, click on the **TrailSave** icon. Select the slide you wish to view and click on the **View** button. The slide will be displayed in TrailSave Viewer mode. This has the added options to:



View a full screen version of the current picture



View a full screen version of the current text



View other relevant pictures



Watch a video



Listen to an audio



Move along your trail by clicking the slide turn icons



The back icon takes you back to the TrailSave screen

If you wish to save your trail, select the **Save** button from the TrailSave screen. This will engage the standard Windows save procedure shown in the box to the directory of your choice. Or type the full destination directory and path name in the space provided and click OK.

A previously saved trail can be loaded into TrailSave using the **Load** button.

GUIDED TOUR

You may find it useful to work through the following routines to familiarise yourself with the features of this disc. All selections are made by moving the mouse to place the cursor arrow on the appropriate icon and clicking the left-hand button.

The whole tour will take you approximately one hour.

Action...

...to see



Religions Of The World opening screen



Select Judaism



Play introductory Judaism video



View introductory Judaism text



See first Judaism Personal View screen



Select an interview question



Play relevant audio



Change religion without leaving Personal View

Action...

...to see



Select Buddhism from menu



Return to main screen –
Buddhism remains selected



Access first Visit screen for
Buddhism



Progress into the Visit section.
Clicking on this Shrine Room
icon will access information rele-
vant to that part of a Buddhist
temple.



Progress into the Visit section.
Clicking on this pictorial icon
will access information about
the mandala.



View relevant picture at full
screen size

Action...

...to see



Return to current slide with normal sized picture



Return to the previous Visit screen



Leave Visit section and return to Religions Of The World opening screen



Select Shinto



Access Matrix screen – Shinto will remain selected



Display first in a series of slides on Shinto beliefs



Display second Shinto beliefs slide



Jump to any of the slides in the Shinto beliefs sequence



Key in the number of the slide you want to view and click on OK

Action...

...to see



Enlarge current text to full screen size



Return to current slide with normal sized text box



Select first in a series of slides on Shinto worship



Activate Compare facility



Display Religions menu



Select Confucianism



Display Aspects menu

Action...

...to see



Select Festivals from menu



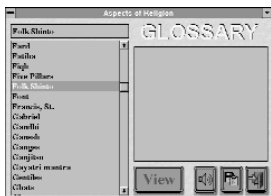
Move forward through the series of slides on either the left- or the right-hand side of the screen



Leave Compare and return to Matrix



Activate the Glossary facility



Find information on Folk Shinto

Action...



...to see

Display Morality of War slide for Hinduism



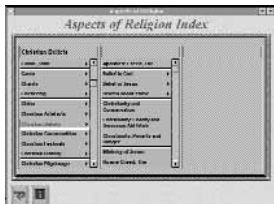
Change either the Issue or the Sub-issue – to change the Sub-issue, click on the lower others button



Display Pacifism slide for Hinduism



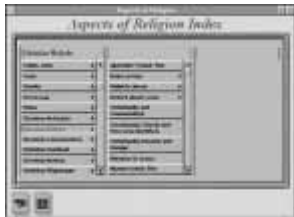
Activate Index facility



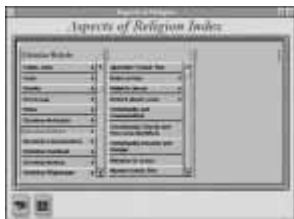
Find entries relating to Christian beliefs

Action...

...to see



Find out about Christian involvement in charity work



Go to the relevant slide



Play relevant audio for this Contemporary Issues slide



Return to Contemporary Issues introductory screen



Return to main menu

ASSESSMENT MANAGER

Assessment Manager is an independent application designed to provide students with a means of testing what they have learned from the Religions of the World CD-ROM. A set of questions is provided for each of the religions on the disc, as well as a general question set.

Getting started

When you run the Assessment Manager program from Program Manager or File Manager, the title page displays two buttons: **New Assessment** and **Load Assessment**. The first time you run the program, select **New Assessment**.

The screenshot shows a dialog box titled "New Assessment" with the following fields and options:

- Student's Class:** Set 1
- Student's Name:** K.P. McHutchlane
- Question Group:** A list containing Buddhism, Christianity, Confucianism (selected), Hinduism, Islam, Judaism, Shinto, and Sikhism.
- Question Set:** Confucianism
- Mode Of Operation:** Radio buttons for Learning (selected) and Test.
- Test Time In Minutes:** A checkbox for "Tested" (unchecked) and a text input field containing "1".
- Buttons:** OK, Cancel, and Summary Info.

Name and class

When you start a new assessment, you will be required to type in your name and your class. (For home use type in, for example, the letter 'A'). It is important that this information is entered accurately. If you save your assessment and want to re-load it in the future, you will have to specify your name and class exactly as you did when you saved your work. You will not be allowed to proceed until you have entered this information correctly.

Saving your pupil file

The set-up details which you enter are automatically saved to the answers directory. To find out how to re-load assessments, see Saving and Loading Assessment.

Learning and Test Modes

A question set can be used in either Learning Mode or Test Mode. The questions are the same in both modes but the method of answering and the response from the computer are different.

In **Learning Mode**, you will be given immediate feedback. For example, if you are answering a multiple-choice question and your first answer is wrong, you will be allowed to try again until you get the answer correct. You will only be permitted to progress to the next question when you have answered the current question correctly.

In **Test Mode**, you are only given feedback when you have answered the complete set of questions. Unlike Learning Mode, you do not have to answer questions correctly to progress to the next one. You can change your mind while

answering the questions, since you are not committed to an answer until you click on the **done** icon.

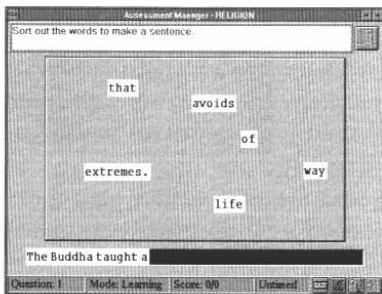
In **Learning Mode**, you have to answer all the questions in the order in which they appear on the screen. In **Test Mode**, you can answer the questions in any order and even pass on a question and come back to it later.

Timing

You have the option to set a time limit in Test Mode. If you choose to do this, the time remaining to complete the question set is shown in minutes. When the time has run out, you are allowed to finish the question that you are currently working on. All question sets have an associated default time. This time can be adjusted if required.

Answering the questions

There are a number of different types of questions, each having a different screen layout. All the questions have certain components in common though.



Done icon



Most of the question types have a **done** icon. When you have completed all the actions required to answer a question, this icon will become active. (It changes from grey to blue and shows a red flashing arrow.) Click on this icon to go to the next question.

This will take you to the next unanswered question. If all the questions have been answered, click on this icon to review your answers.

Not all questions have the done icon, as some questions require only a single action.

Results icon



Clicking on this icon, will display a list of all the questions, the maximum score attainable for the question and the score you achieved.

The score column will indicate one of the following entries:

score

blank if the question has not yet been attempted

passed if the question has been looked at but not answered

time out if the assessment has finished because time has run out

abandoned if the assessment has been voluntarily ended by the user

| Assessment Results | | |
|--------------------|--------|-----------|
| Question No. | Score | Weighting |
| 1 | Passed | 4 |
| 2 | | 5 |
| 3 | | 5 |
| 4 | Passed | 6 |
| 5 | | 2 |
| 6 | Passed | 2 |
| 7 | | 2 |
| 8 | | 2 |
| 9 | | 2 |
| 10 | | 1 |
| 11 | | 1 |
| 12 | 0 | 1 |
| 13 | 1 | 1 |
| 14 | | 2 |
| 15 | | 3 |
| 16 | | 2 |

Go To Question Close

Results window

The results icon is always active in **Test Mode** but will only be active in **Learning Mode** when all questions have been attempted.

You may jump to any question by highlighting it in the list and then clicking on the **Go To Question** icon (or double-clicking on the question in the list). You cannot jump to questions that have been 'timed out' or 'abandoned'. If you have already answered a question that you have jumped to, that question will be shown in review mode.

Abandon unanswered questions icon



There may come a point where you feel that you cannot answer any more questions. To abandon all unanswered questions click on this icon. (The icon will remain inactive until you answer a question). A dialogue box will appear asking you to confirm this action. If you wish to proceed, click on the **OK** icon. All the questions that you have not answered will now be marked as abandoned in the results window. You will now be returned to the first question you attempted so that you can review it. The icon will remain inactive until you answer a question.

Review mode

If you have answered a question and then go back to look at it later, that question will be shown in review mode. You cannot answer the question again but you can re-examine any background information available.

When you have finished reviewing a question, press the **done** icon to go on to the next question. Alternatively, you can bring up the results window and go directly to any question.

Saving and loading assessments

When you end an assessment, you are given the option to save your progress. To save, click on the **Yes** icon.

An assessment does not need to be complete for it to be saved. You can load and finish any uncompleted assessments at a later date. Saving an assessment when all questions have been answered serves as a record of how the assessment was answered. You may leave an assessment at any time.

| Student's Class: | Student's Name: | Question Set: | |
|------------------|-----------------|---------------|---------------|
| JB | Nick | Test | Load |
| | | | Cancel |
| | | | Summary Info. |
| | | | Delete >> |

ASSESSMENT MANAGER

Assessments can be loaded by pressing the Load Assessment icon on the opening screen. This calls up a pop-up window that has three columns displaying classes, names and question sets for previously-saved assessments. If you select the appropriate class, name and question set, and then press the OK icon, you can reload an assessment and continue where you left off.

THE SCRAPBOOK APPLICATION

Installation
Getting Started
Icon Guide
Sample Route

Description

Scrapbook is an independent application, supplied on floppy disk, that can be used with any of the CD-ROMs produced by ILP. It enables you not only to create your own presentations, and reference collections of multimedia information, it also enables you to add sound, text and material from other CD-ROMs from the same designers.

Each Scrapbook collection you create can be individually named, saved to floppy or hard disk and can be loaded and displayed later.

Installation

Running Scrapbook from floppy disk drive:

- 1 Put the Scrapbook floppy disk into the disk drive.
- 2 Double-click the **File Manager** icon.
- 3 From the File Menu choose **Run**.
- 4 In the Run Dialogue Box, type:

`<drive>:\scrbook.exe`

where `<drive>` is the disk drive of the floppy
e.g. `A:\scrbook.exe`

Running Scrapbook from your hard disk:

- 1 Put the Scrapbook floppy disk into the disk drive.
- 2 Click the **File Manager** icon.
- 3 Click File Menu and select **Run**.

- 4 In the Run Dialogue box, type:
<drive>:\setup.exe
where <drive> is the floppy disk.
e.g. A:\scrbook.exe
- 5 Follow the instructions given by the Set-up program.
- 6 Once installed on your hard disk, Scrapbook can be run by clicking on its icon without needing the Scrapbook floppy disk.

Getting started

Before you load Scrapbook, make sure that you have the CD-ROM you want to select items from in the CD-ROM drive.

- 1 Click on the Scrapbook icon
- 2 Click on the name of the CD-ROM you wish to use

The main Scrapbook menu will now appear on screen, enabling you to select the items you wish to add to your customised Scrapbook.

Reference Scrapbook

This is displayed on the left of your screen and lists all the items available on the CD-ROM. Scan through the list by using the scroll bar or arrow to find an item. You can also type in a word or phrase in the dialogue box in order to locate items quickly.

Once you have found the item you require, click on it. Scrapbook will now indicate the media options that are available for your selected item, i.e.

- 1/4 frame (.bmp file)
 - full frame image (.bmp file)
 - Text (.txt file)
 - Sound 1 - word (.avi file)
 - Sound 2 - sentence (.wav file)
- Click on the check box to highlight any option NOT required.
 - Click on the Add button to add the item to your Scrapbook. Once you do this, the title of the item you have selected should appear in the Viewing Scrapbook on the right of your screen.

Viewing Scrapbook

This provides you with the following options:

- Click on **X** to highlight the options you do not require.
- Click on the **Show** icon to view the selected page of your Scrapbook.
- Click on the **Delete** icon to delete the selected page of your Scrapbook.

Import icon

You can import pictures, text, sounds or video from other CD-ROMs or from the hard disk. Click on the **Import** icon and follow the steps below:

- 1 Type in the title you want to give to the page on which the item will appear. This title will appear in your Viewing Scrapbook.
- 2 Select the type of item you want to import from the following menu:
 - 1/4 frame (.bmp file)
 - full frame image (.bmp file)
 - Text (.txt file)
 - Sound 1 - word (.avi file)
 - Sound 2 - sentence (.wav file)
- 3 Open File Manager.
- 4 Drag the required file and drop it into the dialogue box. To open the File Manager, you may have to reduce the size of the Scrapbook application.

Other features

In addition to the Reference and Viewing options, the main Scrapbook menu also contains a number of icons that can be used to manipulate existing scrapbooks or create new ones.

New Scrapbook – creates a new Viewing Scrapbook. If you have not saved the one you are currently working on, you will be prompted to do so.

Open Scrapbook – loads an existing Scrapbook file using standard Windows file opening procedures.

Save Scrapbook – saves the current Scrapbook.

Title – allows you to give each Scrapbook a unique and descriptive title.

Presentation – presents the pages of the current Viewing Scrapbook, starting with the first item in your list. You can then scroll through all the other items.

Change CD – enables you to select the appropriate CD-ROM title. To access a CD-ROM, it must be loaded into the CD-ROM drive.

SCRAPBOOK ICONS

When you select the **Show** icon on the main Scrapbook screen, you will be taken to the Scrapbook-building screen. Depending on the data available and your selections in the check boxes in the Reference and Viewing Scrapbooks, you will see some or all of the following icons:



Back takes you back one step.



Title reveals or hides the title (full screen only)



Save saves current picture or text on to disk.



Magnify Clicking this button will bring up a square. Place the square on the part of the picture that you wish to magnify. Click again to return to the original picture



Print prints the text in the edit box.



Text displays the original text that appeared on the Religions Of The World CD-ROM with this item. You can also edit this text.



Record allows you to add audio while playing back your presentation. However it will not be saved.



Full picture shows the picture at full screen size.



Video plays back video clips.

SAMPLE ROUTE

To familiarise yourself with the features and workings of this application, you may find it useful to run through the following routine. All selections are made by moving the mouse to place the arrow on your choice and clicking the button.

Action...

Execute Scrapbook by clicking on the **Scrapbook** icon

Select **Religions Of The World** CD-ROM.

In the Reference Scrapbook box, type the phrase **Buddha, The**

Click on the **Add** icon

Click on **Buddha, The** in the Viewing Scrapbook

Click on the **Show** icon

Click on **Full Picture** icon

Click on the **Title** icon

Click on **Magnify** and move the box to the part of the picture you wish to magnify

...to see

The Scrapbook title screen and a list of available CD-ROMs

Main Scrapbook screen

Reference Scrapbook list with **Buddha, The** highlighted

The item **Buddha, The** added to the Viewing Scrapbook

Buddha, The highlighted in the Viewing Scrapbook

Buddhist Temple, an empty text box, various icons

Full screen versions of the current page

Displays the title page

Magnification of the selected area of the picture

Action...

Click on **Magnify** again

Click on the **Full Picture** icon

Click on the **Text** icon

Click on the **Back** icon

Click on the **Presentation** icon

Click on the **Back** icon

Insert a floppy disk in the disk drive to save your viewing Scrapbook onto

Click on the **Save Scrapbook** icon

Click on the **New Scrapbook** icon

Click on the **Open Scrapbook** icon

...to see

The original full screen picture

Buddhist Temple, an empty text box, various icons

Displays the original text that appeared in the Religions Of The World CD-ROM with this item - you can also edit the text

Main Scrapbook screen

A presentation of the current item - if you had more items in your Viewing Scrapbook, these would be available in the presentation

Main Scrapbook screen

Floppy disk in drive

Standard Windows save procedure saves your Viewing Scrapbook onto the floppy disk

Clears Viewing Scrapbook

Standard Windows open procedure enables you to load the previously saved Viewing Scrapbook



**DISTRIBUTED BY MENTOROM MULTIMEDIA
A DIVISION OF BFS ENTERTAINMENT & MULTIMEDIA LIMITED**